

K 100 (W) IL

Measuring and control instrument for the inductive conductivity measurement

- Easy and safe operation by plain text menu guidance
- Safety by password function
- Automatic temperature compensation



applications



Cooling And Boiler Feed Water



Waste Water Treatment



Drinking Water / Beverages

description

The K 100 (W) IL is a sophisticated single-channel instrument for measuring and control of inductive conductivity. Additionally temperature measurement of the measuring media is possible. The instrument is available in a panel mounted housing (K100 IL) and in a wall mounted housing (K 100 W IL).



K 100 (W) II

Measuring and control instrument for the inductive conductivity measurement

particular characteristics

- 2 limit values with delay, assigned to alarm relay
- 2 separate PI-controllers
- Dosage check
- Background illuminated two-line LC-Display for measured value and temperature
- Serial interface RS 485 optional
- Scaleable, galvanically isolated 0/4 .. 20 mA output
- Display of relay status and error messages
- Invertible alarm output, permanent or pulse contact



K 100 (W) II

Measuring and control instrument for the inductive conductivity measurement

technical data

measuring parameter

Conductivity (inductive)	0 .. 2.000 mS/cm
	0 .. 20.00 mS/cm
	0 .. 200.0 mS/cm
	0 .. 2000 mS/cm

input characteristics

temperature measuring range	-30 .. +140 °C
temperature coefficient	Adjustable 0 .. 8,0 %/°C or non-linear

output characteristics

output signal	0/4 .. 20 mA (scaleable, galvanically isolated)
load	max. 500 Ohm
registration range	free scaleable within the measuring range
serial interface	RS 485 (optional)
	Baud rate 9600
	data format 8 bit

power supply

line voltage	24 / 117/ 230 VAC, +6/-10%, 40 .. 60 Hz
power consumption	10 VA

ambient conditions

ambient temperature	Operation 0 .. +50 °C, storage -20 .. +65°C
relative humidity	max. 90% rH at 40°C (non-condensing)
protection class	panel mounted housing IP 54 (front), IP 30 (housing)
	wall mounted housing IP 65

controller

control response	on/off controller (adjustable hysteresis)
	P/PI controller (pulse-pause, pulse-frequency or continuous output)
relays	2 relays, each with a potential-free NO contact, max. 250V, 6 A, 550 VA
	1 alarmrelay with potential-free CO/NO contact, max. 250V, 6A, 550 VA
onset delay	0 .. 200 sec till controller active
digital input	Controller stop via external contact

certificates and approvals

CE-symbol	Declaration of conformity: The product meets the requirements of the harmonized European standards. It thus complies with the legal requirements of the EC directives. The manufacturer confirms successful testing of the product by affixing the CE symbol.
-----------	--



K 100 (W) IL

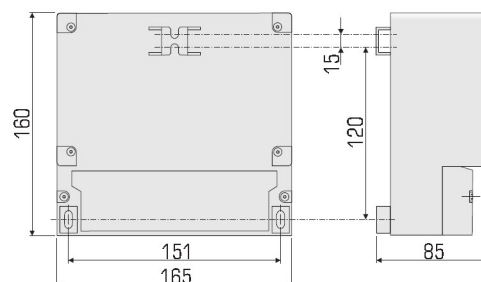
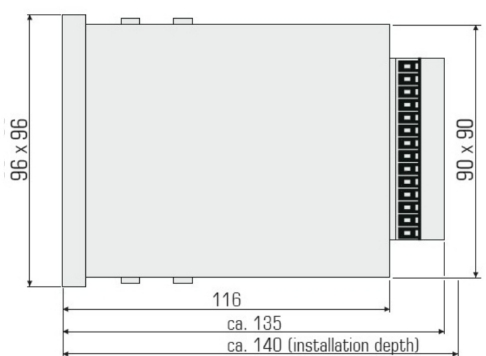
Measuring and control instrument for the inductive conductivity measurement

mechanical construction - panel mounted housing

material	Noryl
dimensions	90x90x116 mm
installation dimensions	92x92x140 mm
weight	0.75 kg
connection	push-screw terminals

mechanical construction - wall mounted housing

material	ABS
dimensions	165x160x85 mm
weight	0.95 kg
connection	Spring-loaded terminals



order information

<u>name</u>	<u>description</u>	<u>article number</u>
K 100 IL	inductive, panel mounted housing, 230 VAC	100190K
K 100 W IL	inductive, wall mounted housing, 230 VAC	105190K



K 100 (W) II

Measuring and control instrument for the inductive conductivity measurement

accessories

accessories

PKV 30-DPS

Converter for PROFIBUS-DP for max. 32 instruments of the K 100 oder dialog series. Converting of RS 485 to PROFIBUS-DP interface, instrument in a housing for installation on a top hat rail, dimension 105 X 105 x 80 mm (HxBxT), connectioncable inclusive

S-341 data logger

The bus data logger S-341 on the base of the RS-485 with Kuntze protocol reads, shows, and stores measuring data of up to 10 Kuntze instruments with up to 8 parameters each.

